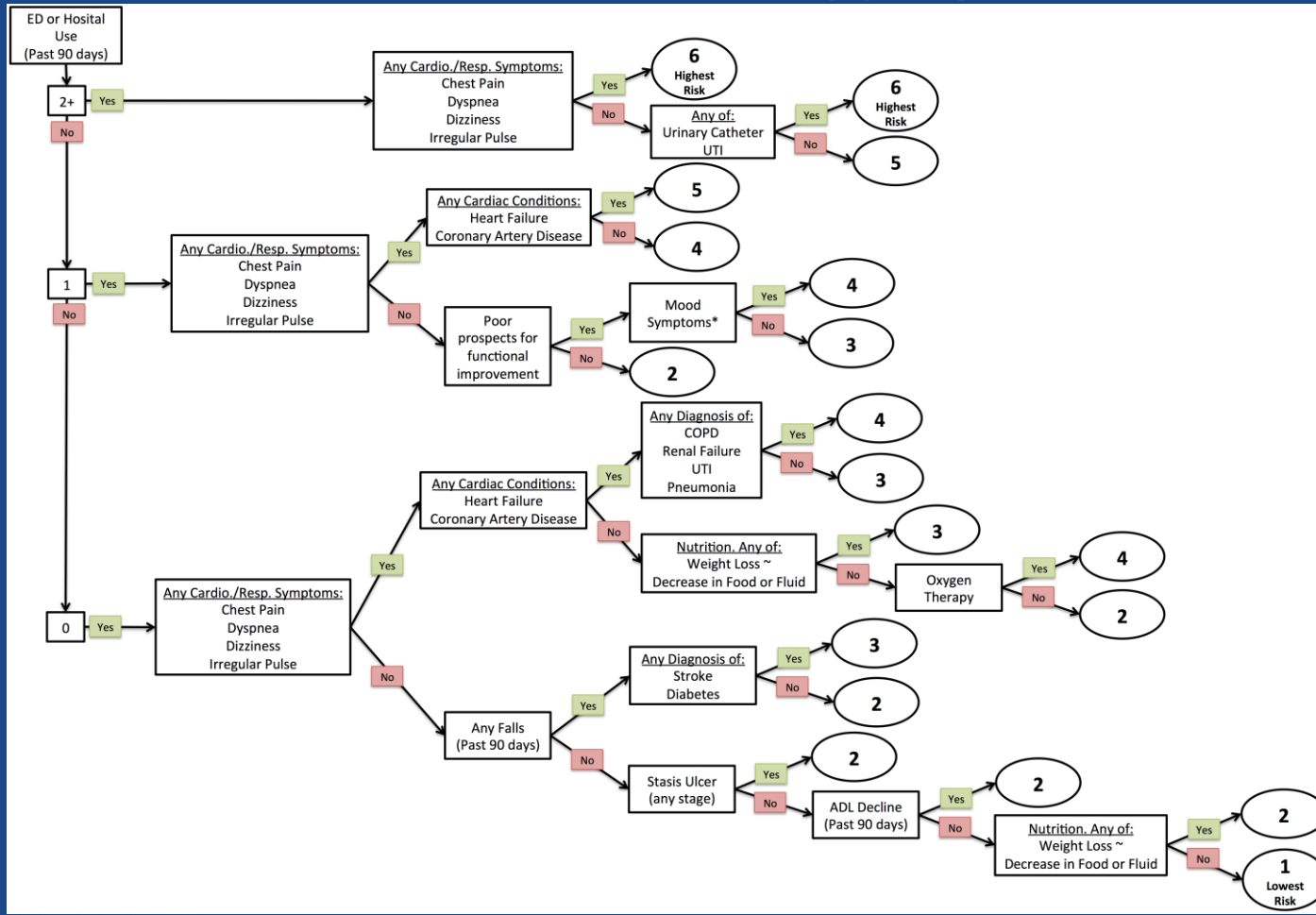


Practical Application for the DIVERT Scale



Practical Application for the DIVERT Scale



Practical Application for the DIVERT Scale

- Objective 1 – to enable proactive intervention to maximize health and wellbeing
- Objective 2 – to support people to die in the way that they choose
- Objective 3 – to prevent use of Emergency Department
- Objective 4 – to prevent people being admitted to an acute ward

Practical Application for the DIVERT Scale

- Retrospective report identifying
 - CHES score of 4 or 5
 - DIVERT score of 5 or 6
- Plan to make contact to ensure
 - ACP in place, focussing on options for treatment and end of life plans
 - EPOA in place
 - Recent medications review
 - Recent medical review

Practical Application for the DIVERT Scale

- Process now more prospective than retrospective
- As HC assessments identify DIVERT Scale of 5 or 6 and CHES score of 4 or 5 the team refer to our Intensive Intervention team
- II team consists of OT and RN NASC

Practical Application for the DIVERT Scale

- 6 month review will compare the original retrospective clients with those who received intervention from II team
- Comparison of
 - ED presentation
 - Admission rate
 - ACP
 - End of Life location